

COMPRESSOR

Displacement (cm ³)	21.75
Diameter (mm)	38.1
Stroke (mm)	19.07
Net Weight (Kg)	20.2
Oil type	ISO VG 46 ESTER
Oil charge (cm ³)	640

MOTOR

Approximate Power (CV)	5/8
Voltage/Frequency (V/Hz)	220V 50Hz
Voltage range (V)	198-264
Code	82,142
Type	CSIR
Phase number	1 PH
Locked rotor current (A)	26.0
Main W. resist. at 25°C (Ω)	2.45
Start W. resist. at 25°C (Ω)	25.9

APPLICATION

Application	High/Mid. back pressure
Refrigerant	R134a
Evaporating (°C)	-25 to 10
Expansion	Capillar/Valve
Comp. cooling	Fan cooled
Max. ambient temp. (°C)	43

NOMINAL PERFORMANCE

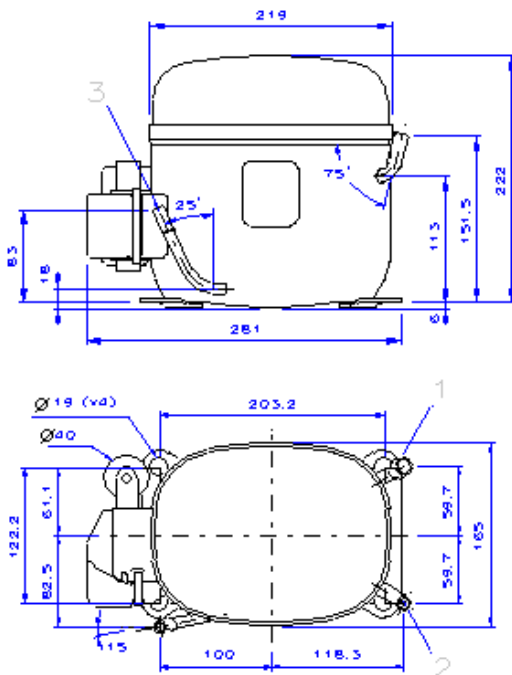
	CYCLE C	CYCLE D
Cooling capacity (W)	1705	2035
Input power (W)	815	840
EER (kcal/Wh)	1.79	2.08
COP (W/W)	2.09	2.42
Current (A)	4.99	5.09

TEST CONDITIONS

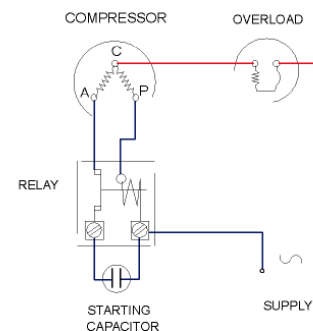
	CYCLE C	CYCLE D
Evaporating temp. (°C)	5.0	7.2
Condensing temp. (°C)	55.0	55.0
Liq.t. entering expan. (°C)	55.0	46.0
Ambient t. and return (°C)	32.0	35.0
Tens/Freq (V/Hz)	220V 50Hz	220V 50Hz

ELECTRICAL COMPONENTS

Relay	9660 A 180	MTRP 16
Pick-Up (A)	16,70	16,70
Drop-Out (A)	14,00	14,00
Protector	MRT16ALK	T0666
Current (A)	16.2	15.0
Time check (seg)	7.5-14	7.5-14
Disc temp. (Open/Close) (°C)	105.0 / 61.0	105.0 / 61.0
Starting capacitor (μF/V)/F/V)	72- 88 / 330	

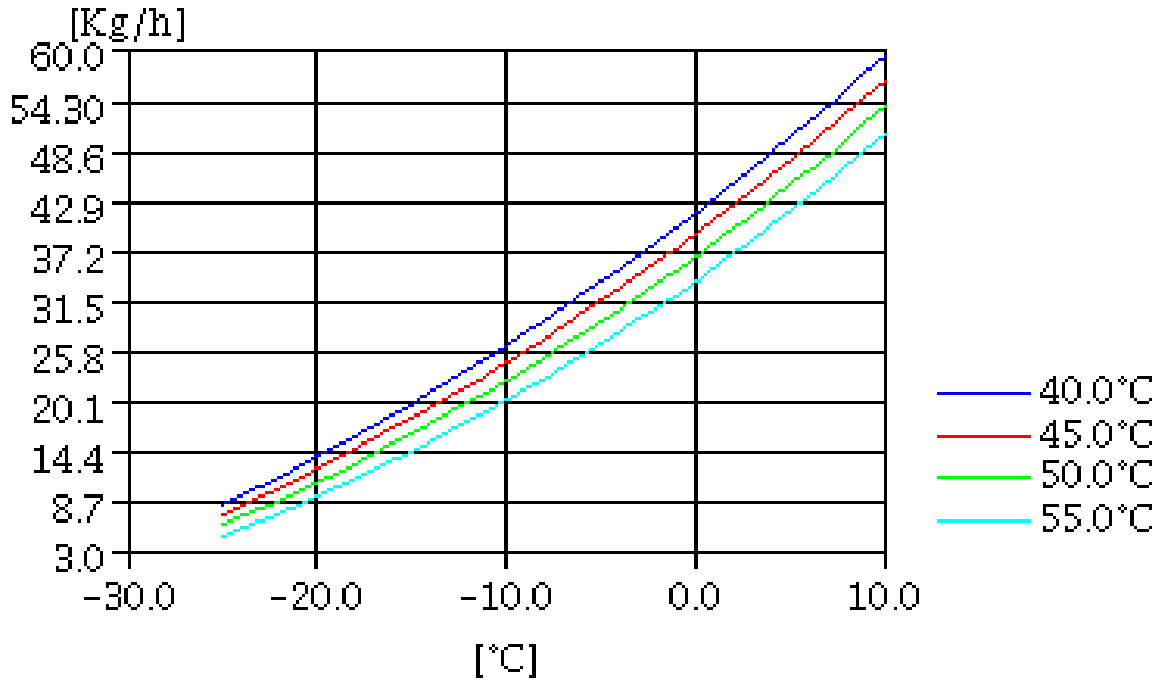
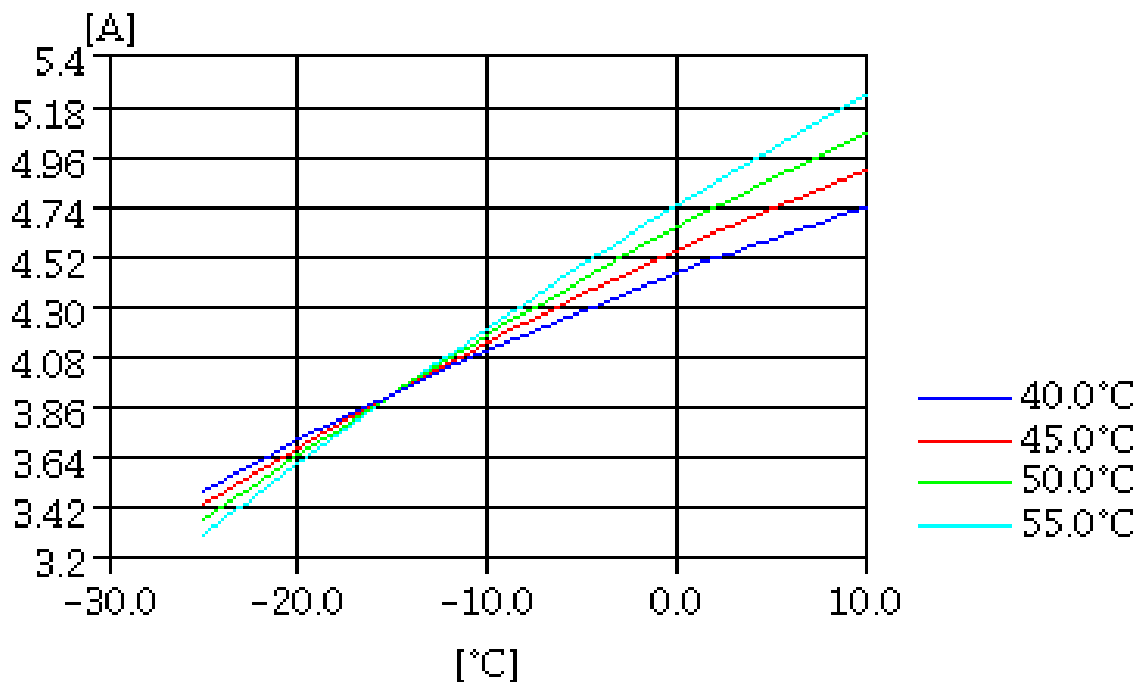
DIMENSIONS AND ELECTRICAL DIAGRAM


DESIGNATION	INTERNAL DIAM. (MM)
1 Suction	12,7
2 Service	9,6
3 Discharge	8,0

CSIR


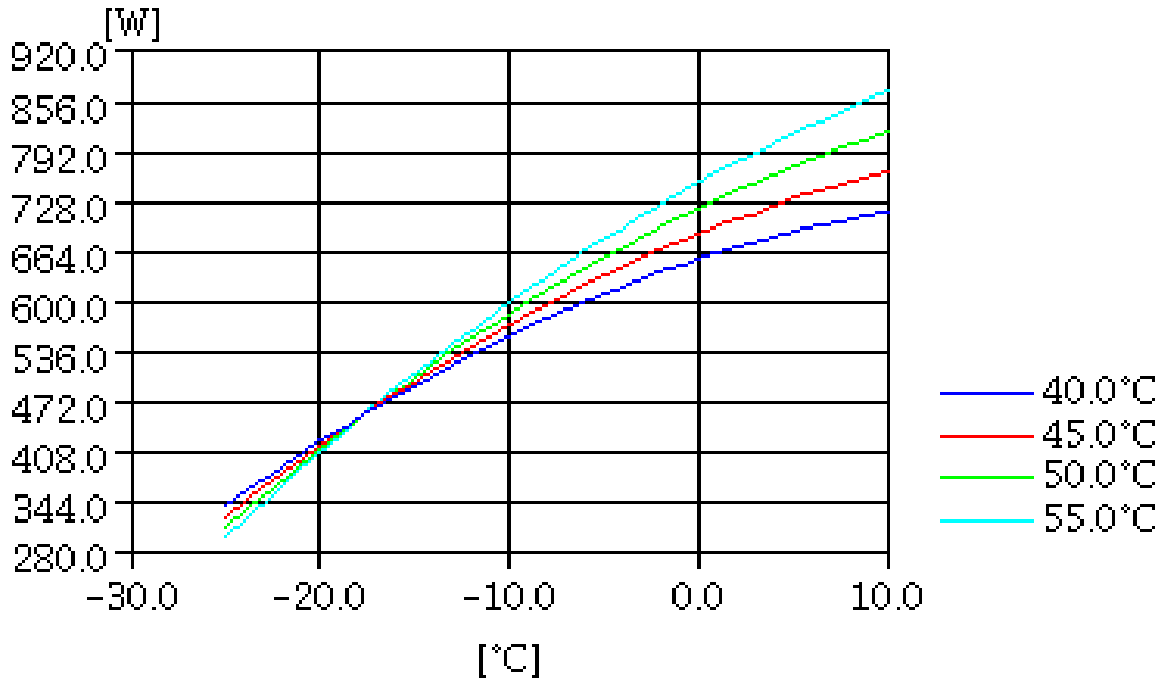
TEST CONDITIONS

Voltage/frequency	220V 50Hz
Ambient t. and return	35 °C
Liq.t. entering expan.	Subcooling 9 K

MASS FLOW

CONSUMPTION


TEST CONDITIONS

Voltage/frequency	220V 50Hz
Ambient t. and return	35 °C
Liq.t. entering expan.	Subcooling 9 K

INPUT W

COOLING CAPACITY
